

Canine IgE Rapid Test (C.IgE)

Catalog No.: JCA009D

◇ INTENDED USE

The Canine IgE Rapid Test is a test cassette to diagnose the presence of total IgE (C.IgE) in dog's blood specimen.

Assay Time: 5-10 minutes

Specimen: Serum, or plasma

◇ PRINCIPLE

The E.canis Ab Rapid Test is based on sandwich lateral flow immunochromatographic assay.

◇ REAGENTS AND MATERIALS

- Test devices
- Sample collection loop (1 μ L, out of box)
- Assay buffers
- Products Manual

◇ STORAGE AND STABILITY

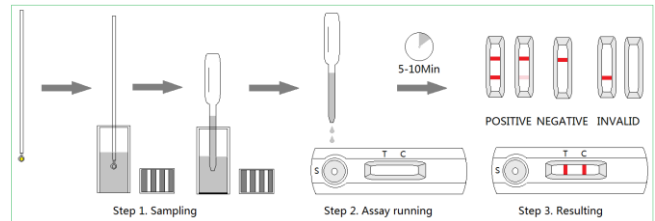
The kit can be stored at room temperature (4-30°C). The test kit is stable through the expiration date (24 months) marked on the package label. DO NOT FREEZE. Do not store the test kit in direct sunlight.

◇ SPECIMEN PREPARATION AND STORAGE

1. Specimen should be obtained and treated as below.
 - Serum or plasma: collect the whole blood from the patient dog, centrifuge it to get the serum, or place the whole blood into a tube which contains anticoagulants to get plasma.
2. All specimen should be tested immediately. If not for testing right now, they should be stored at 2-8°C.

◇ TEST PROCEDURE

- Allow all materials, including specimen and test device, recover to 15-25°C before running the assay.
- Take out the test device from the foil pouch and place it horizontally.
- Insert the sample collection loop to serum specimen, immerse only the tip loop into the specimen.
- Take out the loaded loop and insert into the assay buffer tube. Gently twirl the loop and make the serum specimen resolve in the assay buffer.
- Place 2 drops (approx. 80 μ L) of the diluted buffer into the sample hole immediately.
- Interpret the result in 5-10 minutes. Result after 10 minutes is considered as invalid.



◇ INTERPRETATION OF RESULTS

- Positive (+): The presence of both "C" line and zone "T" line, no matter T line is clear or vague. The result indicates that the total IgE is above 10 μ g/mL.
- Negative (-): Only clear C line appear. No T line observed. The result indicates that the total IgE is below 10 μ g/mL.
- Invalid: No colored line appears in C zone. No matter if T line appears.

◇ PRECAUTIONS

- All reagents must be at room temperature before running the assay.
- Do not remove test cassette from its pouch until immediately before use.
- Do not use the test beyond its expiration date.
- The components in this kit have been quality control tested as standard batch unit. Do not mix components from different lot numbers.
- All specimens are of potential infection. It must be strictly treated according to the rules and regulations by local states.

◇ LIMITATION

The Canine IgE Rapid Test is for in vitro veterinary diagnosis use only. All result should be considered with other clinical information available with veterinarian. It is suggested to apply a further quantitative method such as Elisa or Western blot when positive result was observed.



J&G Biotech Ltd (Reg. No.: 08419172)

326 Cleveland Road, London, England E18 2AN, UK